

## COST ESTIMATE - ANNEX 1



### PROJECT NAME

### Client

UAB EcoCocon  
EcoCocon-Partner Slovensko  
CREATERRA s.r.o.  
Hruby Súr 15, 90301 Senec  
Bjørn Kierulf  
Mob. 0905 313078  
bk@createrra.sk  
www.ecococon.lt/english

Dear Client,

we thank you very much for having the opportunity to present you with a a cost estimate for your customers healthy and comfortable home.

Price exkl. 20% VAT.

Description	Amount	€/m2	Price
Ecococon Strawpanels	170 m2	140,00 €	23800,00 €
Discount	170 m2	-20,00 €	-3400,00 €
Connection materials (Screws)	170 m2	2,00 €	340,00 €
Panelproject	1		350,00 €
Transport cost (Estimate)			1200,00 €
<b>SUM</b>			<b>22290,00 €</b>

**With your building you will protect the environment and save money:**

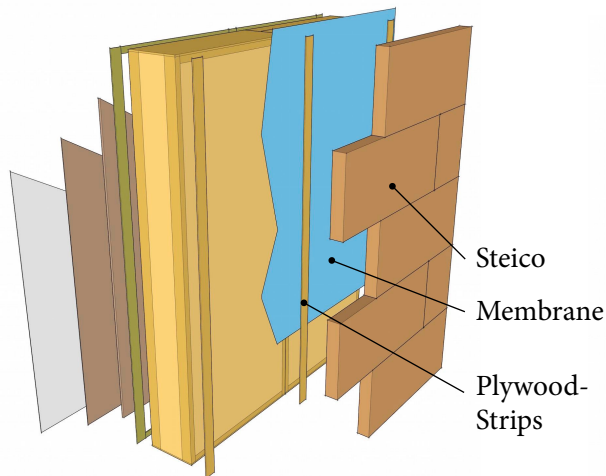
<b>12 750 kg</b>	<b>44 574 kg</b>	<b>1 292 kWh</b>	<b>9690 €</b>
In Ecococon sequestered CO2	CO2-Emissions saved over 50 years	heating energy saved each year	heating costs saved over 50 years
<b>Calculation basis:</b>	Heat Pump COP 2,5	Climate zone cooling: 20 kWh	
Energy cost	0,15 €/kWh	Climate zone heating: 80 kWh	
Ecococon U-value:	0,11 W/m2K	Comparative U-value:	0,30 W/m2K

**Your comfort** is our concern: If the **surface temperature of the wall** outside is at -10°C, then the inside surface temperature will only drop by **0,16°C**. This gives you in combination with **clay plaster directly applied on straw** an extraordinary feeling of well-being.

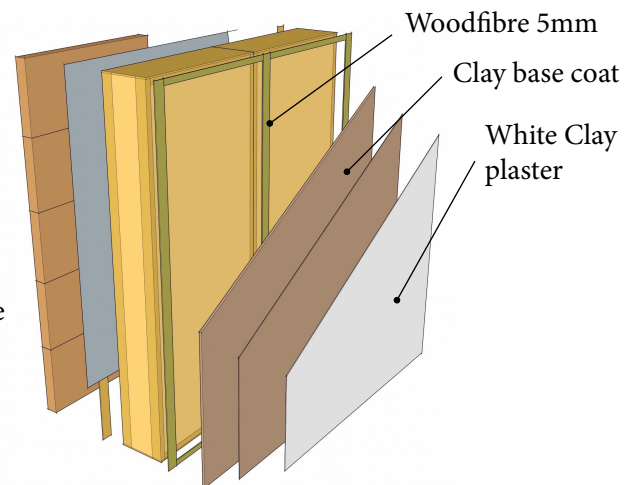
With the **Ecococon Building Concept** it is possible to achieve **airtightness of 0,6 1/h** or better and together with its **optimised thermal bridges** has the potential to fully achieve **Passivhaus Standard**.

## COST ESTIMATE SURFACES

### VIEW Outside:



### VIEW Inside:



<b>INSIDE</b> Price exkl. VAT.	Material costs €/m2	Labor estimate min./m2
Wood fibre 5mm over wood construction	0,50 €	5 min./m2
Clay base coat 30mm (3-layers)	10,00 €	55 min./m2
White Clay Plaster 2mm	7,00 €	20 min./m2
<b>Insgesamt</b>	<b>17,50 €</b>	<b>80 min./m2</b>
<b>OUTSIDE</b> Price exkl. VAT.	Material costs €/m2	Labor estimate min./m2
Airtight, vapour-open Membrane and tapes	2,60 €	10 min./m2
Plywood-strips	2,00 €	5 min./m2
Steico Protect 100mm	18,00 €	30 min./m2
<b>SUM</b>	<b>22,60 €</b>	<b>45 min./m2</b>
<b>FACADE</b> Is not part of delivery, only for your information	Material costs €/m2	Labor estimate min./m2
Ventilated wooden facade w. base construction, from	28,00 €	72 min./m2
Render, from	22,00 €	48 min./m2
Large formate ventilated facade, from	60,00 €	90 min./m2

The materials costs and labor estimates per m2 can vary depending on the project, these are some average values based on experience.

## COST ESTIMATE CONCLUSION

<b>Panel Area</b>	<b>Surface outside +10%</b>	<b>Surface inside -10%</b>
170 m <sup>2</sup>	187 m <sup>2</sup>	153 m <sup>2</sup>
<b>Estimated material costs:</b>		
<b>22 290 €</b>	<b>4 226 €</b>	<b>2 678 €</b>
<b>29 194 €</b>		
<b>Estimated side costs (Crane, Scaffolding, Coverings etc.):</b>		
12 €/m <sup>2</sup>	8 €/m <sup>2</sup>	5 €/m <sup>2</sup>
<b>2 040 €</b>	<b>1 496 €</b>	<b>765 €</b>
<b>4 301 €</b>		
<b>Estimated labor:</b>		<b>Labor cost per hour: 35,00 €</b>
170 h	140 h	204 h
<b>5 950 €</b>	<b>4 909 €</b>	<b>7 140 €</b>
<b>17 999 €</b>		
<b>Estimate of materials, side costs and labor (all prices without VAT)</b>		
<b>30 280 €</b>	<b>10 631 €</b>	<b>10 583 €</b>
<b>51 493 €</b>		

Ecococon delivers only straw panels and accompanying materials. We do not provide services mentioned in side costs nor the needed labor. The Estimate does not provide a binding offer and is only an approximate guideline for further decision making.

Delivery time normally 2-10 weeks after signing of contract.

### Next steps

- A general contract is signed based on the estimate
- A detailed panel project is then produced in cooperation with the architect
- 50% payment of the materials costs validates the contract and production is initiated
- 50% payment after production but before delivery

Usually panels are ordered by the company or craftsmen you hired for the construction of the building. The delivery and invoices will be directly dealt with Ecococon, Ltd., Odminių str. 10-9, Vilnius, LT-01122, VAT code LT100006430619.

We recommend that the assembly and plaster work should be done by local companies. We can arrange to have professionals assist during assembly for the first projects.